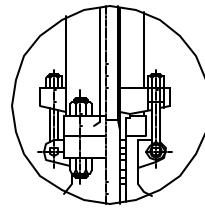


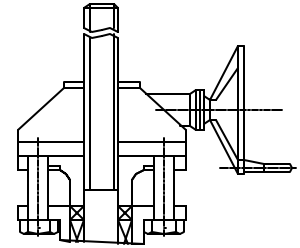
Cast Steel Gate Valve

Class 900 Flanged (2" to 16") - 90FGAW

Class 900 Butt Weld (2" to 16") - 90BGAW

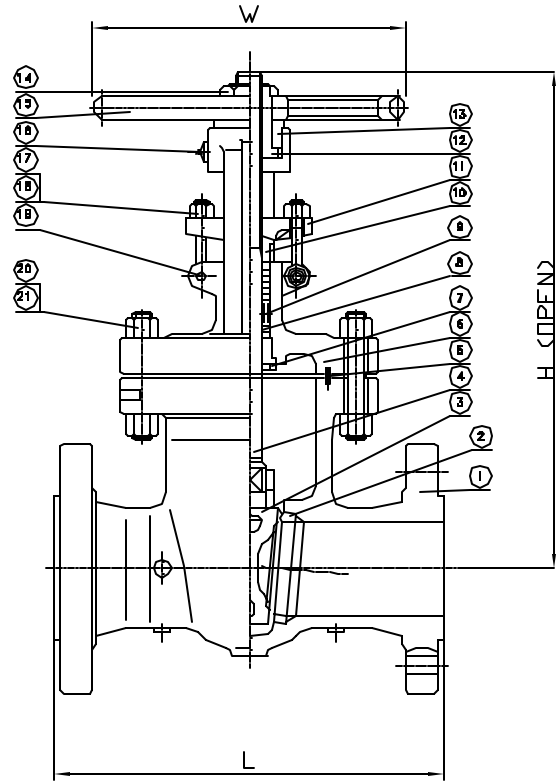


6" & Larger



Gear Operator

NO.	PART NAME	MATERIAL
1	BODY	A216 WCB
2	SEAT	A105+HF
3	WEDGE	WCB+F6
4	STEM	A182 F8
5	GASKET	Spiral Wound SS/Graphite
6	BONNET	A216 WCB
7	BACK SEAT	A276 410
8	PACKING	Graphite
9	DISTANCE RING	A276 410
10	PACKING GLAND	A276 410
11	GLAND	A216 WCB
12	STEM NUT	D-2 Ductile Iron
13	GLAND NUT	A29 1035 Steel
14	LOCK NUT	A29 1035 Steel
15	HANDWHEEL	Ductile Iron
16	GREASE FITTING	Steel
17	EYE BOLT	A193 B7 Steel
18	EYE NUT	A194 2H Steel
19	PIN	A29 1035 Steel
20	BOLT	A193 B7 Steel
21	NUT	A194 2H Steel



Davis cast steel valves comply with the following applicable specifications: ANSI B16.10, ANSI B16.5, API 600: Tested to API 598

Working Pressure: 2220 WOG Body Testing Pressure: 3330 psi
Seat Testing Pressure: 2442 psi Air Testing Pressure: 80 psi

NPS d	in	2	2-1/2	3	4	6	8	10	12	14	16
	mm		47	57	73	98	146	190	238	282	311
L (RF & BW)	in	14.5	16.5	15	18	24	29	33	38	40.5	44.5
	mm	368	419	381	457	610	737	838	965	1029	1130
H (open)	in	21.54	27.56	25.51	28.7	40.98	49.61	62.6	70.67	79.72	85.43
	mm	547	700	648	729	1041	1260	1590	1795	2025	2170
W	in	11.81	13.78	15.75	17.72	22.05	18.11	24.02	24.02	29.92	29.92
	mm	300	350	400	450	560	460*	610*	610*	760*	760*
WT (Lbs)	RF	198	243	271	326	926	1433	2557	3748	5071	6063
	BW	181	205	238	269	791	1248	2161	3197	4409	5269

* Manual gear operator is recommended.

