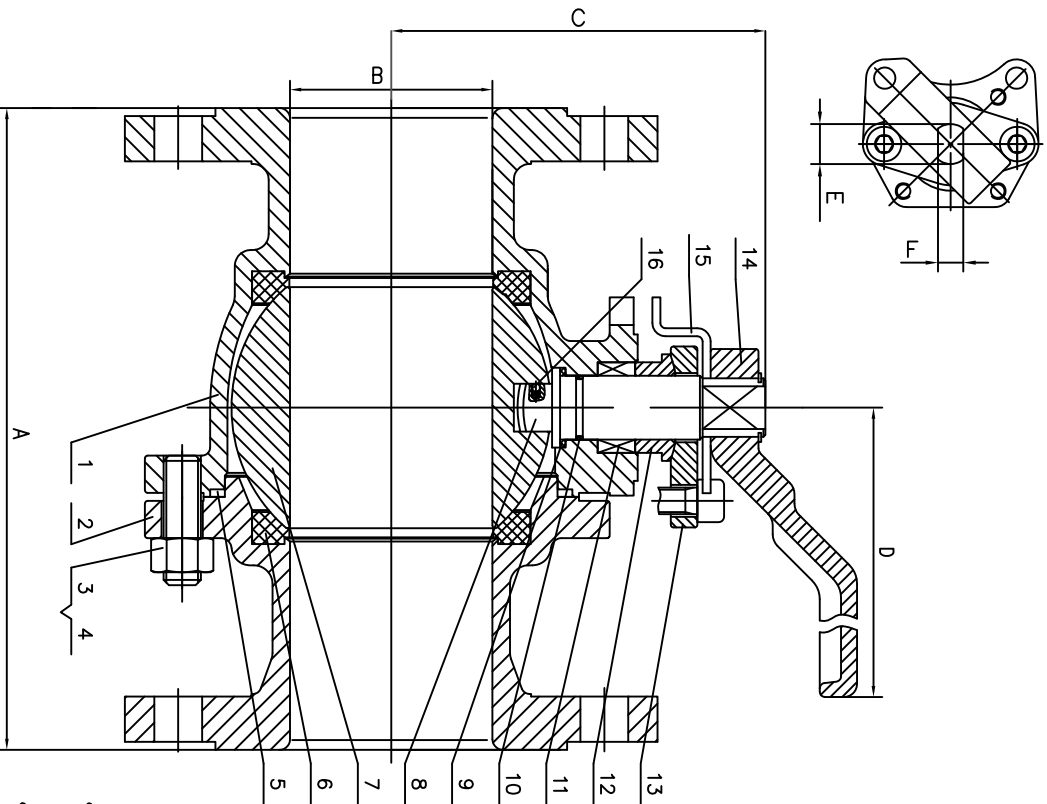


Ball Valve Full Port

Model # 15FBA-FWFR (WCB)

Model # 15FBA-FFFR (316SS)

Designed to ASME B16.34/API 608
 Face to Face to ASME/ANSI B16.10
 Flange Dimensions to ASME/ANSI B16.5
 Tested to API 598
 API 607 Fire Safe
 ISO 5211 Mounting Pad



No.	Part	WCB	316SS
1	Body	WCB	CF8M
2	Bonnet	WCB	CF8M
3	Stud	A193 B7	A193 B8
4	Nut	A194 2H	A194 8
5	Gasket	316+Graphite	316+Graphite
6	Seat	CPTFE	CPTFE
7	Ball	316SS	316SS
8	Stem	316SS	316SS
9	Thrust Washer	PTFE	PTFE
10	D-Ring	VITON	VITON
11	Packing	Graphite	Graphite/PTFE
12	Packing Gland	A105	316SS
13	Gland	WCB	CF8M
14	Handle	WCB	CF8
15	Stop	SS	SS
16	Anti-Static	316SS	316SS

Size in	A	B	C	D	E	F	Wt lbs
1	5.0	1.0	3.0	7.75	.63	.39	9.0
1-1/4	5.5	1.25	3.5	7.75	.59	.375	11.0
1-1/2	6.5	1.5	3.5	7.75	.59	.375	14.0
2	7.0	2.0	4.25	11.0	.59	.37	19.8
2-1/2	7.5	2.5	5.5	14.2	.87	.59	28.7
3	8.0	3.0	5.7	14.2	.87	.59	37.5
4	9.0	4.0	8.0	17.7	1.10	.71	61.7

Davis Valve

Rev 2020