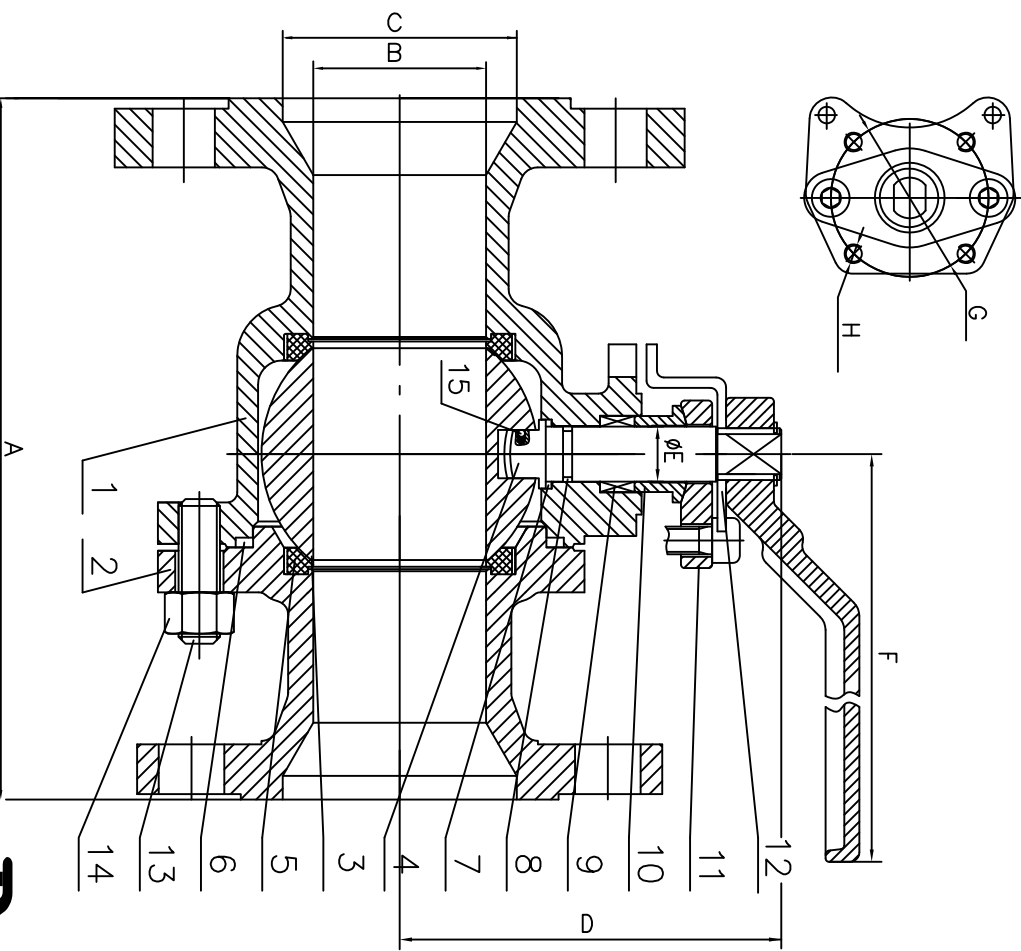


Ball Valve Standard Port

Model # 15FBA-SWFR (WCB)
Model # 15FBA-SFFR (316SS)



Designed to ASME B16.34/API 608
 Face to Face to ASME/ANSI B16.10
 Flange Dimensions to ASME/ANSI B16.5
 Tested to API 598
 API 607 Fire Safe
 ISO 5211 Mounting Pad

No.	Part	WCB	316SS
1	Body	WCB	CF8M
2	Bonnet	WCB	CF8M
3	Ball	316SS	316SS
4	Stem	316SS	316SS
5	Seat	RPTFE	RPTFE
6	Gasket	316+Graphite	316+Graphite
7	Gasket	PTFE	PTFE
8	O-Ring	VITON	VITON
9	Packing	Graphite	Graphite/PTFE
10	Packing Gland	A105	304SS
11	Gland	WCB	CF8
12	Stop	CS+Zn	304
13	Stud	A193 B7	A193 B8
14	Nut	A194 2H	A194 8
15	Anti-Static	SS	SS

Size in	A	B	C	D	E	F	G	H	Wt lbs
2	7.0	1.5	2.0	3.8	.63	7.5	2.0	4-M6	22
2-1/2	7.5	2.0	2.5	4.3	.79	11.0	2.75	4-M8	31
3	8.0	2.0	3.0	4.6	.79	11.0	2.75	4-M8	40
4	9.0	3.0	4.0	7.3	.79	14.2	2.75	4-M8	71
6	10.5	4.0	6.0	8.9	1.5	17.7	4.9	4-M12	132

