

CAST STEEL FLANGED LUBRICATED PLUG VALVE 2"

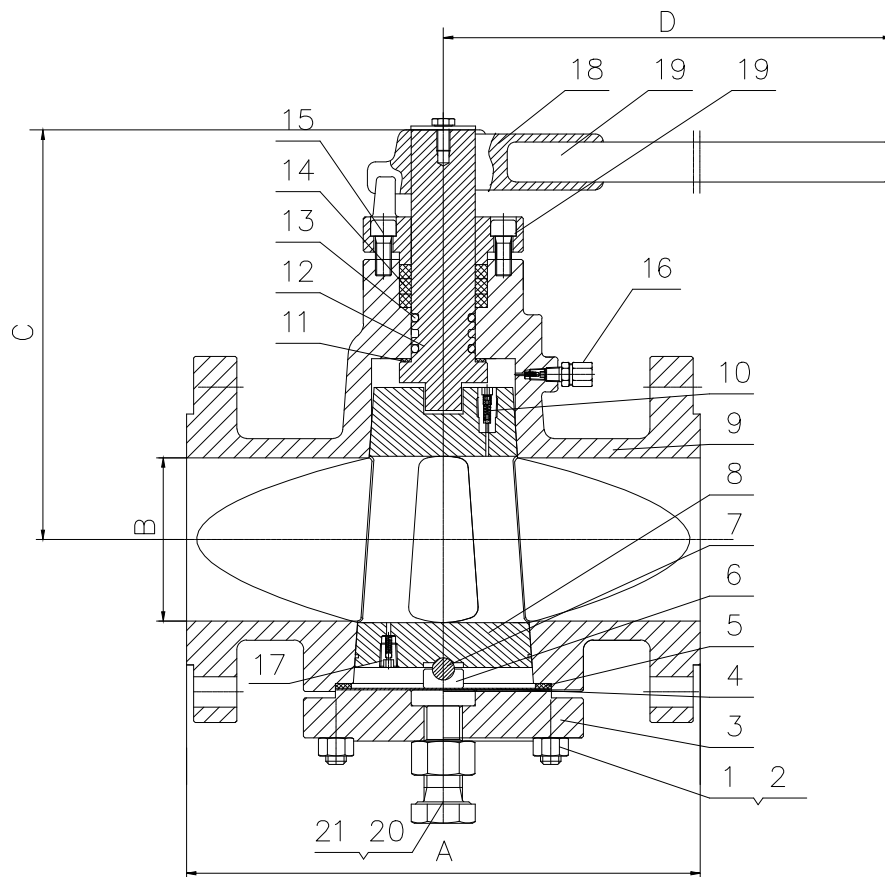
1500 LBS
MODEL# 150FPLW-PB

Pressure Balanced Lubricated Plug Valve

Technical Requirements

1. Design & manufacture conform to API 6D.
2. Test & Inspect conform to API598.
3. Face to Face dimension conforms to ANSI 16.10.
4. Flange dimension conforms to ANSI B16.5.
5. Pressure-Temperature rating to ASME B16.34
6. FIRE SAFE Design
7. NACE MR-0175 (Option)

No.	NAME	MATERIAL	No.	NAME	MATERIAL
1	BOLTS	A193 B7	12	STEM	A276 410
2	NUT	A194 2H	13	O-RING	NBR
3	COVER	A216 WCC	14	PACKING	GRAPHITE
4	METAL DIAPHRAGM	SS-304	15	BOLTS	A193 B7
5	GASKET	SS-304+GRAPHITE	16	GREASE FITTING	UCA
6	SEAT FOR BALL	A276 410	17	CHECK VALVE	SS-304
7	BALL	SS-304	18	HANDLE	A216 WCB
8	PLUG	A322 4140+ENP0.03mm	19	GLAND	A216 WCB
9	BODY	A216 WCC	20	LOCK NUT	A194 2H
10	CHECK VALVE	SS-304	21	ADJUSTING BOLT	A193 B7
11	GASKET	PTFE			



SIZE	A		B		C		D		Wt	
	mm	inch	mm	inch	mm	inch	mm	inch	lbs	kg
2"	368	14.5	47	1.9	180	7.1	800	31.5	105.8	48

