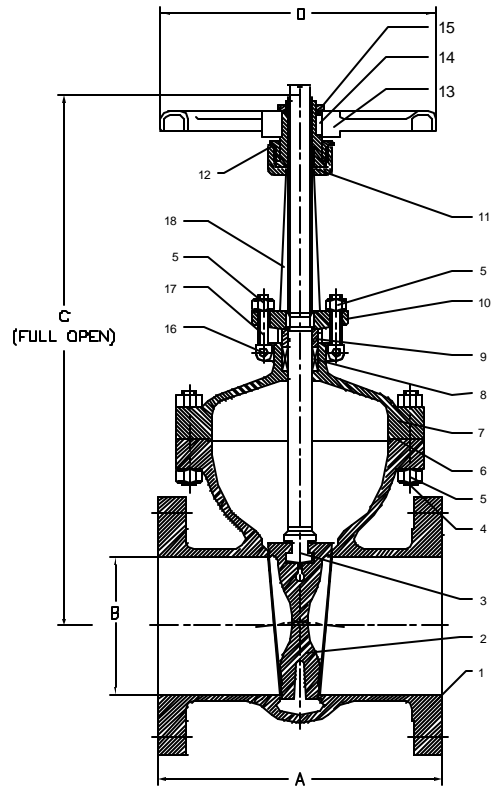


Stainless Steel Gate Valve

Model #10

Class 300 (1" to 14")

Full port
 Precision machined flex wedge gate and seat for tight shutoff
 Heavy duty cast construction
 Body-guided wedge insures alignment, low closing torques
 and reduced noise and vibration
 Integral backseat
 Outside screw and yoke, non-rising handwheel, rising stem
 Rugged carbon steel handwheel
 Available in a wide range of alloys



Designed to ANSI B16.34,
 API 603, tested to API 598.
 Face to face ANSI B16.10,
 Flanges to ANSI B16.5

NO.	PART NAME	A 351-CF8M	A 351-CN7M
1	BODY	A 351-CF8M	A 351-CN7M
2	WEDGE	A 351-CF8M	A 351-CN7M
3	STEM	A 276-316	A 351-CN7M
4	STUD	A 193-BB	A 193-BBM
5	HEX NUT	A 194-8	A 194-8M
6	GASKET	PTFE	PTFE
7	BONNET	A 351-CF8M	A 351-CN7M
8	GLAND PACKING	BRAIDED PTFE	BRAIDED PTFE
9	GLAND BUSH	A 276-316	A 351-CN7M
10	GLAND FLANGE	A 276-316	A 351-CN7M
11	STEM NUT	AL BRONZE (B 148-Gr D)	AL BRONZE (B 148-Gr D)
12	BONNET BUSH	A276-304/A 351-CF8	A276-304/A 351-CF8
13	HAND WHEEL	A 216-WCB/DUCTILE IRON	A 216-WCB/DUCTILE IRON
14	PARALLEL KEY	C 40	C 40
15	HAND WHEEL NUT	STEEL	STEEL
16	GROOVED PIN	A 276-304	A 276-304
17	GLAND BOLT	A 182-F304	A 182-F304
18	YOKE	A 351-CF8M	A 351-CN7M

SIZE	INCH	1	1½	2	2½	3	4	6	8	10	12	14
	MM	25	40	50	65	80	100	150	200	250	300	350
A *	INCH	6.5	7.5	8.5	9.5	11.12	12	15.88	16.5	18	19.75	30
	MM	165	190	215.9	241.3	282.4	304.8	403.4	419.1	457.2	501.7	762.0
B	INCH	1	1.5	2	2.5	3	4	6	8	10	12	13.25
	MM	25	40	51	64	76	102	152	203	254	305	337
C	INCH	9.1	11.6	13.6	16	19.7	23	30.7	39.4	44.5	55.5	65
	MM	230	295	345	405	500	585	780	1000	1130	1410	1650
D	INCH	4.9	6.7	7.5	7.9	8.7	11.4	13.8	15.75	15.75	19.7	23.6
	MM	125	170	190	200	220	290	350	400	400	500	600
Weight	LBS	-	-	40	-	89	148	268	418	672	946	1342
	KGS	-	-	18	-	40	67	122	190	305	429	609

* BWE dimensions are the same as flanged

