

# Trunnion Mounted Full Port Ball Valve

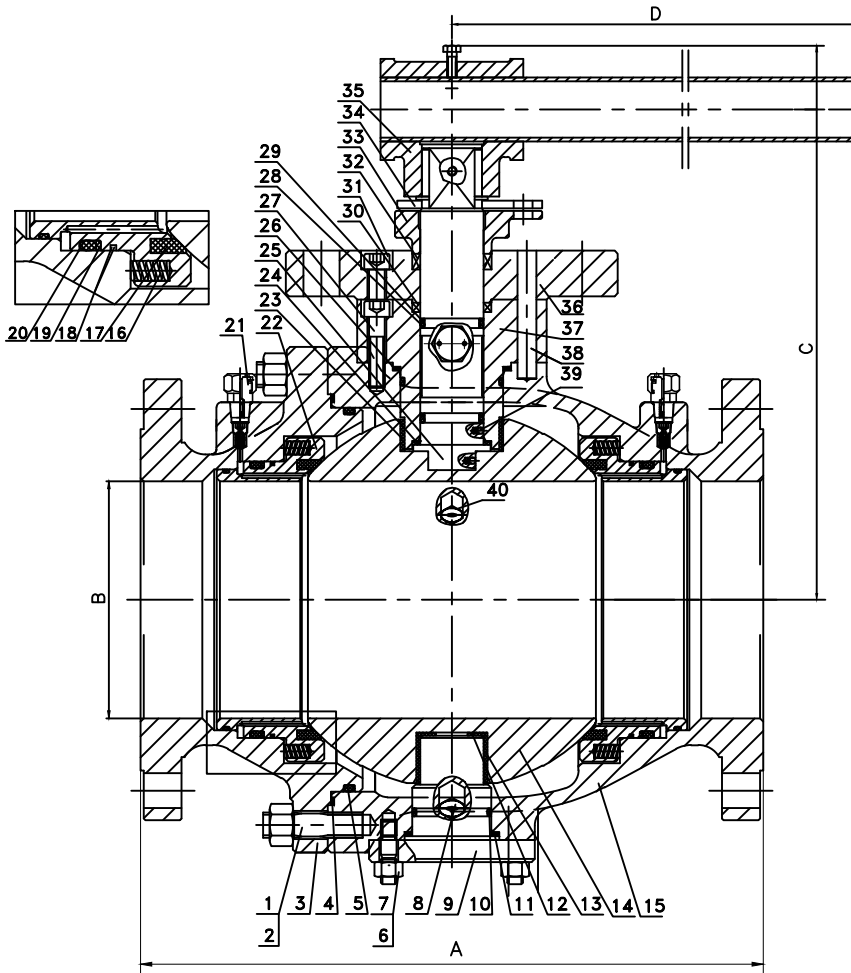
Model # T15FBA-FWFR-FS (WCB)

Model # T15FBA-FFFR-FS (CF8M)

Technical requirements:

1. Design and Manufacture Standard ASME B16.34
2. Face to Face ASME/ANSI B16.10
3. Flange Dimension : ASME/ANSI B16.5
4. Inspection and Test Standard: API598
5. API 607 Fire Safe
6. ISO 5211 mounting pad
7. NACE MR 0175

Size in	A	B	C	D	Wgt lbs
4	9.0	4.0	7.8	15.7	88
5	14.0	5.0	8.4	31.5	137



No	Part	Material WCB	Material CF8M
1	Stud	A193 B7M	A193 B8M
2	Nut	A194 2HM	A194 8M
3	Bonnet	A216 WCB	A351 CF8M
4	Gasket	Graphite	Graphite
5	O-Ring	Viton	Viton
6	Stud	A193 B7M	A193 B8M
7	Nut	A194 2HM	A194 8M
8	Drain Valve	316ss	316ss
9	Lower Cover	316ss	316ss
10	O-Ring	Viton	Viton
11	Gasket	Graphite	Graphite
12	Thrust Bearing	PTFE	PTFE
13	Stem Bearing	PTFE+316	PTFE+316
14	Ball	316ss	316ss
15	Body	A216 WCB	A351 CF8M
16	Spring	X750	X750
17	Seat	RPTFE	RPTFE
18	Packing	Graphite	Graphite
19	Gasket	PTFE	PTFE
20	O-Ring	Viton	Viton
21	Grease Valve	316	316
22	Seat Retainer	A105+ENP	F316
23	Stem Bearing	PTFE+316	PTFE+316
24	Gasket	PTFE	PTFE
25	Stem	316	316
26	Gasket	Graphite	Graphite
27	Screw	A193 B7M	A193 B8M
28	Gasket	PTFE	PTFE
29	O-Ring	Viton	Viton
30	Packing	Graphite	Graphite
31	Screw	A193 B7M	A193 B8M
32	Packing	Graphite	Graphite
33	Gland	A105+ENP	F316
34	Stop	CS+Zn	SS
35	Sleeve	A216 WCB	A351 CF8M
36	Seal Cover	A105+ENP	F316
37	Mounting Pad	A105+ENP	F316
38	Pin	SS	SS
39	Anti-Static	316	316
40	Release Valve	316	316

