

Trunnion Mounted Full Port Ball Valve

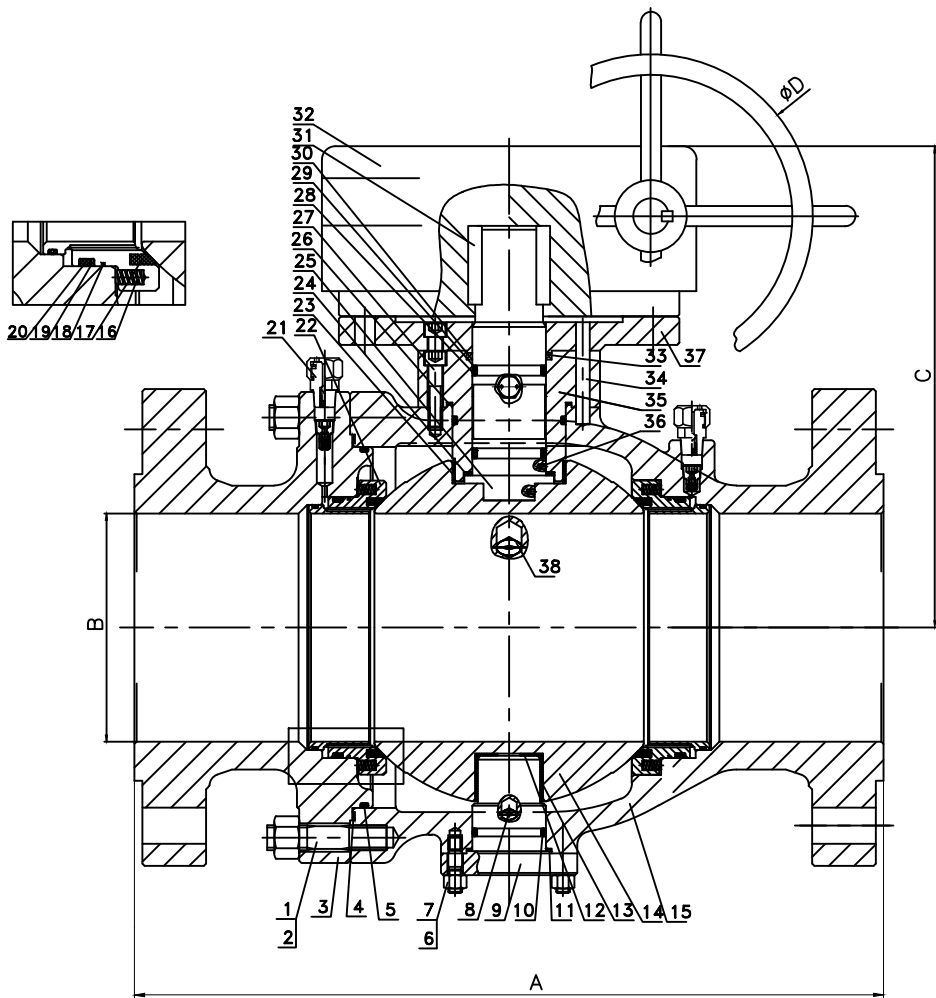
Model # T15FBA-FWFR-FS (WCB)

Model # T15FBA-FFFR-FS (CF8M)

Technical requirements:

1. Design and Manufacture Standard ASME B16.34
2. Face to Face ASME/ANSI B16.10
3. Flange Dimension : ASME/ANSI B16.5
4. Inspection and Test Standard: API598
5. API 607 Fire Safe
6. ISO 5211 mounting pad
7. NACE MR 0175

Size in	A	B	C	D	Wgt lbs
6	15.5	6.0	12.25	13.8	172
8	18.0	8.0	12.32	18.1	467
10	21.0	10.0	17.24	23.6	728
12	24.0	12.0	20.08	23.6	1030
14	27.0	14.0	21.50	23.6	1285
16	30.0	16.0	22.64	23.6	1925
18	34.0	18.0	26.0	23.6	2901
20	36.0	20.0	28.7	23.6	3609
24	42.0	24.0	33.0	23.6	7915



No	Part	Material WCB	Material CF8M
1	Stud	A193 B7M	A193 B8M
2	Nut	A194 2HM	A194 8M
3	Bonnet	A216 WCB	A351 CF8M
4	Gasket	Graphite	Graphite
5	O-Ring	Viton	Viton
6	Stud	A193 B7M	A193 B8M
7	Nut	A194 2HM	A194 8M
8	Drain Valve	316ss	316ss
9	Lower Cover	316ss	316ss
10	O-Ring	Viton	Viton
11	Gasket	Graphite	Graphite
12	Thrust Bearing	PTFE	PTFE
13	Stem Bearing	PTFE+316	PTFE+316
14	Ball	316ss	316ss
15	Body	A216 WCB	A351 CF8M
16	Spring	X750	X750
17	Seat	RPTFE	RPTFE
18	Packing	Graphite	Graphite
19	Gasket	PTFE	PTFE
20	O-Ring	Viton	Viton
21	Grease Valve	316	316
22	Seat Retainer	A105+ENP	F316
23	Stem Bearing	PTFE+316	PTFE+316
24	Gasket	PTFE	PTFE
25	Stem	316	316
26	Gasket	Graphite	Graphite
27	Screw	A193 B7M	A193 B8M
28	Gasket	PTFE	PTFE
29	O-Ring	Viton	Viton
30	Packing	Graphite	Graphite
31	Key	SS	SS
32	Gear	Assembly	Assembly
33	Packing	Graphite	Graphite
34	Pin	SS	SS
35	Gland	A105+ENP	F316
36	Anti-Static	316	316
37	Mounting Pad	A105	F316
38	Release Valve	316	316