

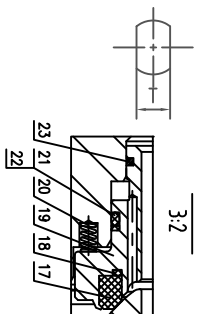
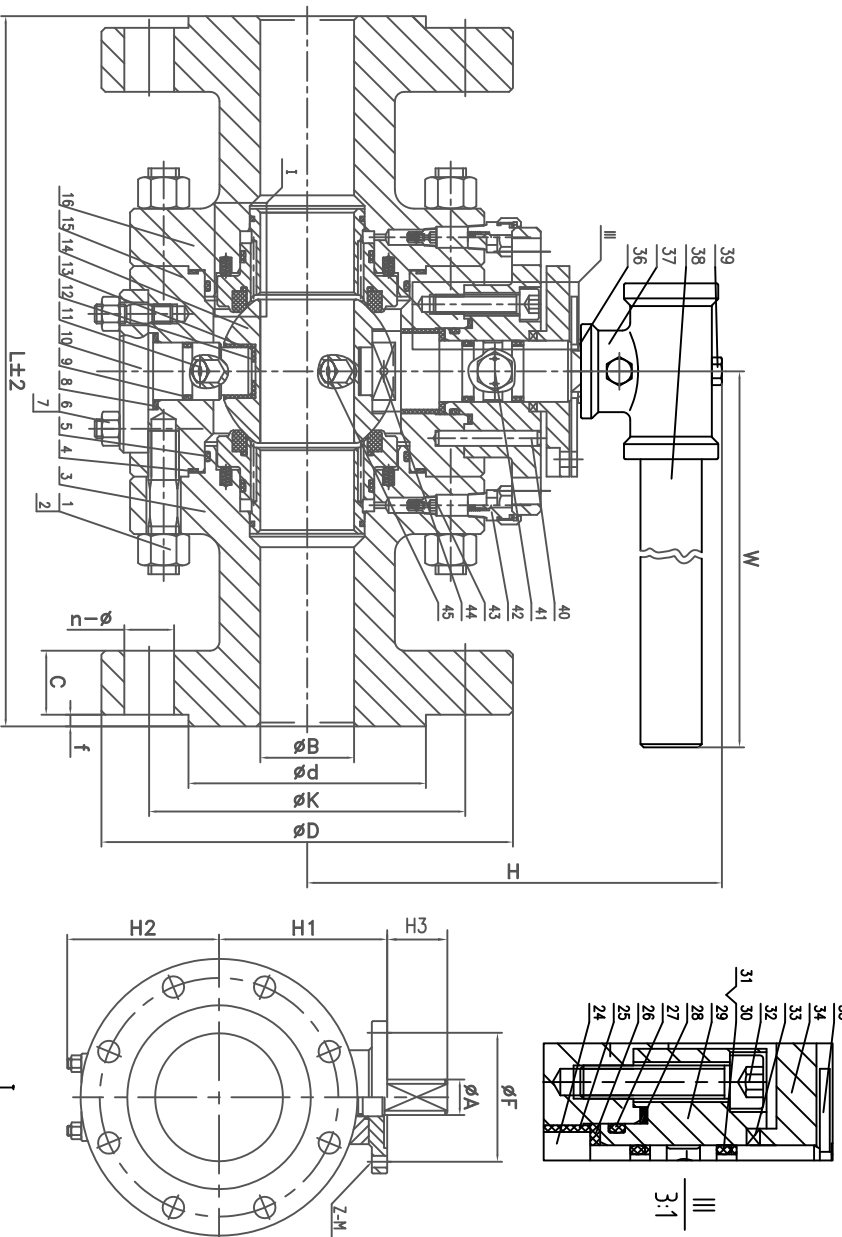
Trunnion Mounted Full Port Ball Valve

Class 900 Flanged

Model # T90FBA-FWFN-FS (A105)

Model # T90FBA-FFFN-FS (F316)

Technical Requirements		Nominal Pressure	
Design and Manufacture	API 6D/ASME B16.34	CLASS 900LB	
Face to Face/End to End	ASME/ANSI B16.10	Shell Test	3264
Hange Dimension	ASME/ANSI B16.5	Seat Test	2393
Inspection & Test	API 598	Gas Seal Test	PS9
Mounting Pad	ISO 5211	Working Temp	-20~248
Other requirements	INCE 160175	Suitable Medium	Water,Oil,Gas
		Fire-proof design	API 607



NO	PART	MATERIAL A105	MATERIAL F316
1	STUD	ASTM A193 B7M	A193 B7M
2	NUT	ASTM 194 2HM	A194 8M
3	BODY	ASTM A105	A182 F316
4	GASKET	SS316-GRAPHITE	SS316-GRAPHITE
5	O-RING	VITON(AED)	VITON(AED)
6	STUD	ASTM A193 B7M	A193 B7M
7	NUT	ASTM A194 2HM	A194 8M
8	GASKET	SS316-GRAPHITE	SS316-GRAPHITE
9	O-RING	VITON(AED)	VITON(AED)
10	LOWER COVER	A105-ENP	A182 F316
11	DRAIN VALVE	A105-Zn	A182 F316
12	THRUST BEARING	PTFE	PTFE
13	STEM BEARING	316-PTFE	316-PTFE
14	BALL	A182 F316	A182 F316
15	BODY	ASTM A105	A182 F316
16	BODY	ASTM A105	A182 F316
17	SEAT	DEV-LON	DEV-LON
18	O-RING	VITON(AED)	VITON(AED)
19	SEAT RETAINER	A182 F316	A182 F316
20	SPRING	INCONEL X750	INCONEL X750
21	O-RING	VITON(AED)	VITON(AED)
22	THRUST WASHER	PTFE	PTFE
23	PACKING	GRAPHITE	GRAPHITE
24	STEM	A182 F51	A182 F51
25	STEM BEARING	316-PTFE	316-PTFE
26	THRUST BEARING	PTFE	PTFE
27	O-RING	VITON(AED)	VITON(AED)
28	GASKET	316-GRAPHITE	316-GRAPHITE
29	SEAL COVER	A105-ENP	A182 F316
30	THRUST WASHER	PTFE	PTFE
31	O-RING	VITON(AED)	VITON(AED)
32	BOLT	ASTM A193 B7M	A193 B7M
33	PACKING	1/2PTFE+1/2GRAPHITE	GRAPHITE
34	PACKING GLAND	ASTM A105	A182 F316
35	PLATE	CS-Zn	SS
36	ELASTIC SNAP RING	65Mn	65Mn
37	T-HUB	A216 WCB	A216 WCB
38	LEVER	1025	1025
39	HEX SCREWS	ASTM A193 B7M	A193 B7M
40	PN	1035	1035
41	INJECTION VALVE	A105-Zn	A182 F316
42	INJECTION VALVE	A105-Zn	A182 F316
43	CHECK VALVE	A105-Zn	A182 F316
44	ANTI-STATIC DEVICE	SS316	SS316
45	RELEASE VALVE	A105-Zn	A182 F316

NPS(DN)	L(RF)	B	D	K	d	C	f	n-Ø	A	U	F	E	T	H1	H2	n-ØK	H	W
3"(80)	15.00	2.95	9.45	75.00	5.00	1.52	0.28	8-1	1.50	3.35	4.92	0.20	5.91	6.30	5.12	4-14	11.46	4.724